



Announcement of

**PUBLIC HEALTH(COVID-19)
Regulations (4) 2020**

Minister of Health
Honourable Motlatsi Maqelepo

TRAVELLERS TO AND FROM LESOTHO

1

Patient (with two accompanying people)

2

Business traders and freight forwarders

3

Commuting workers and scholars

4

- **Basotho returnees (who exited Lesotho and return within and after 7 days)**
- **Non-Basotho from low risk countries**

5

- **Funeral attendees**
- **For identification of the deceased family member.**

6

Pensioners who receive their grants in South Africa

7

Retrenched migrant workers collecting their payout packages

8

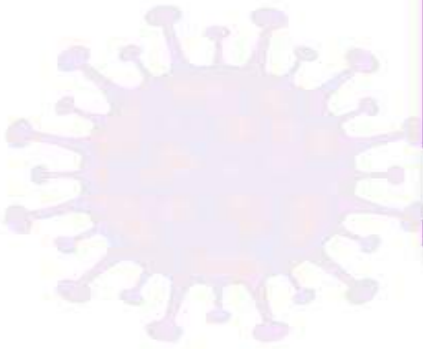
Travelers with special circumstances (Subject to approval from Ministry of Health)



NACOSEC
NATIONAL COVID-19 SECRETARIAT



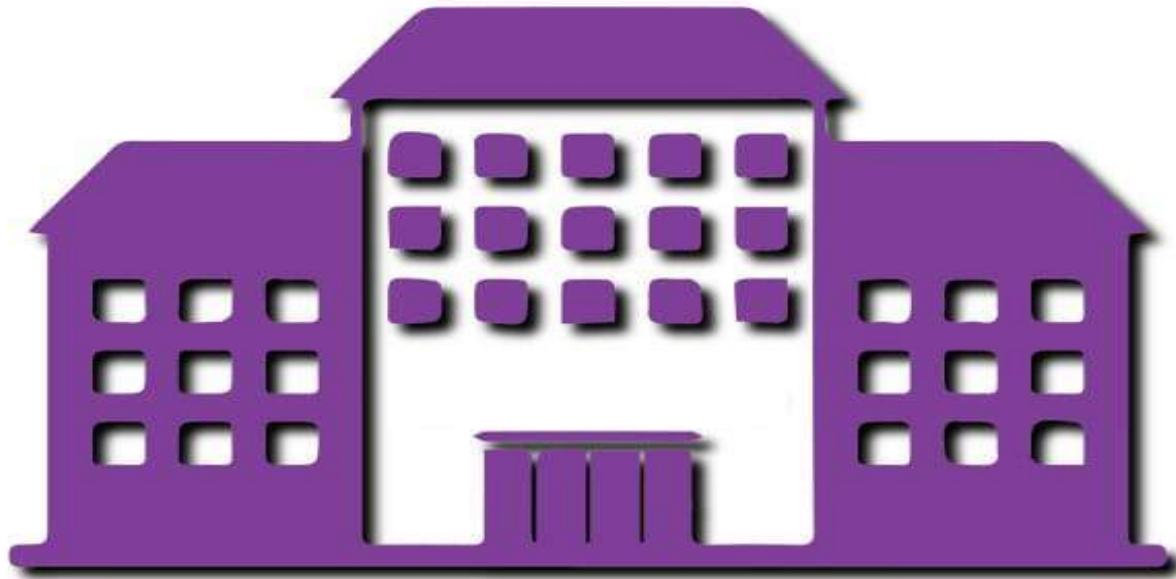
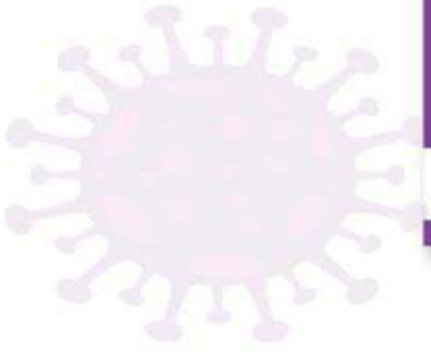
SCHOOLS



- **Open in line with the Ministry of Education Guidelines.**



INSTITUTIONS OF HIGHER LEARNING



- **Open in accordance with Risk Mitigation Framework.**



SOCIAL FAMILY GATHERINGS



- **Not more than 100 people outdoors**
- **COVID-19 protocols observed**
- **No alcohol**



NACOSEC
NATIONAL COVID-19 SECRETARIAT

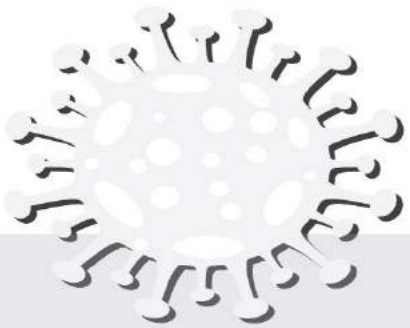


EVENTS AND ENTERTAINMENT

Indoor

EVENT**S**

- **Permit from Ministry of Tourism**
- **120 people/ 300 sqm**
- **COVID-19 protocols observed**
- **2 Bouncers/Security Personnel**
- **No alcohol**



EVENTS AND ENTERTAINMENT

Outdoor

E **V** **E** **N** **T** **S**



NACOSEC
NATIONAL COVID-19 SECRETARIAT

- **Permit from Ministry of Tourism**
- **Places liable to a legally registered business entity**
- **120 people/ 300 sqm for small spaces**
- **Not more than 500 people for large spaces.**
- **5 Bouncers /Security Personnel**
- **No alcohol**



SPORTS



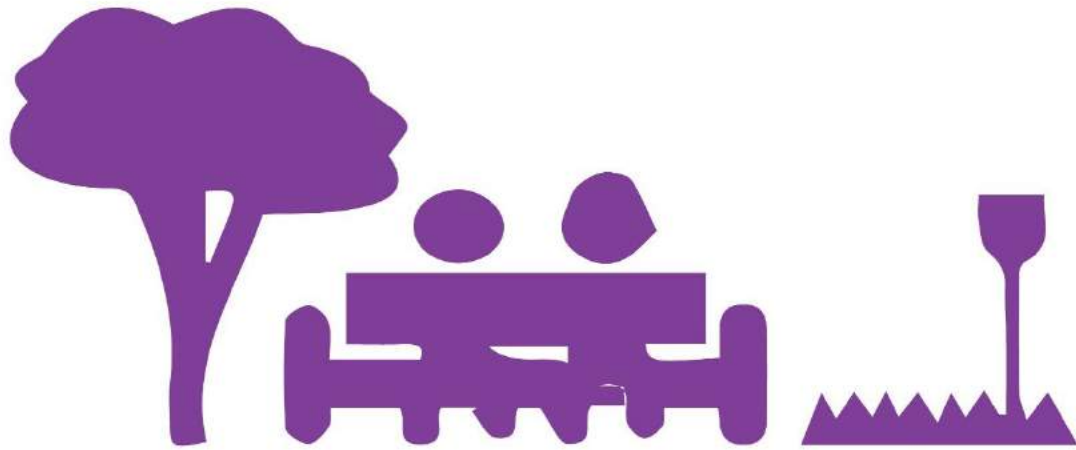
- **Outdoor sports**
- **No spectators**
- **Not more than 100 people**



NACOSEC
NATIONAL COVID-19 SECRETARIAT

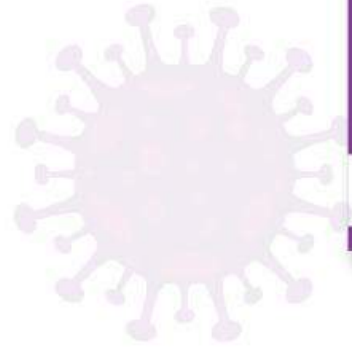


PUBLIC RECREATIONAL AREAS (PARKS)



- **Open subject to approval of standard Risk-Based Guidelines**
- **COVID-19 protocols observed**
- **No alcohol**





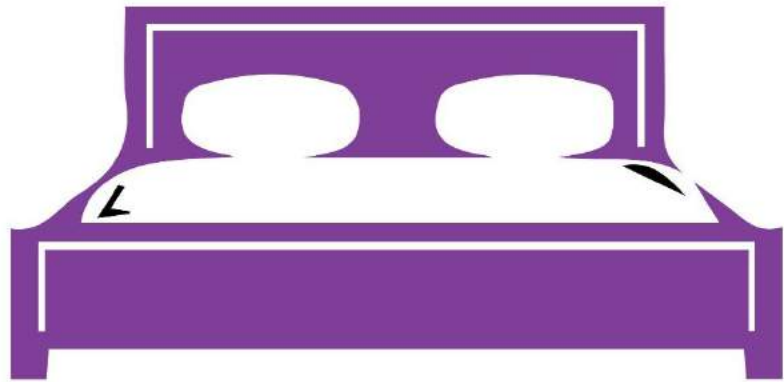
GYM/FITNESS CENTRE



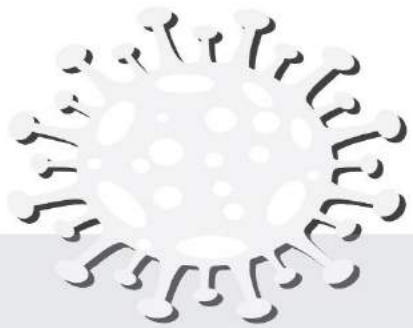
- **Outdoors/Open space**
- **Not more than 100 people**



TOURISM INDUSTRY (Hotels, BnB's, etc.)



H O T E L



NACOSEC
NATIONAL COVID-19 SECRETARIAT

- **Open subject to COVID-19 protocols**
- **Sit in allowed**
- **No alcohol**



RESTAURANTS & FAST FOODS



- **Open subject to approved standard Risk-Based Guidelines**
- **Sit in allowed**
- **No alcohol**

