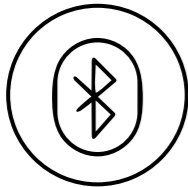


Unstoppable summer: our plan to manage COVID-19

In summer New Zealanders travel around the country, socialise, and go to large events, increasing the possible spread of COVID-19 in the community. During the holidays, this can make any response more challenging – but we've got a plan. Our plan outlines how to **reduce** the risk of, get **ready** for, and **respond** to new COVID-19 cases.

REDUCE What you can do



Turn on Bluetooth on your phone and in the NZ COVID Tracer App



Scan QR Codes wherever you go



Wash and dry your hands



Cough/sneeze into your elbow



Stay home if you're sick and ring your GP or Healthline for advice



Travel with a 'COVID kit' – soap, sanitiser and a face covering

READY Our toolkit



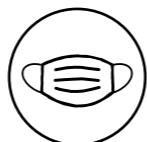
Border entry measures
Managed Isolation & Quarantine, and workforce testing.



Contact tracing
NZ COVID Tracer app/Bluetooth data and push notifications, and an on-call workforce.



Community testing
Targeted testing of contacts, surveillance testing, pop-up stations, and an on-call workforce.

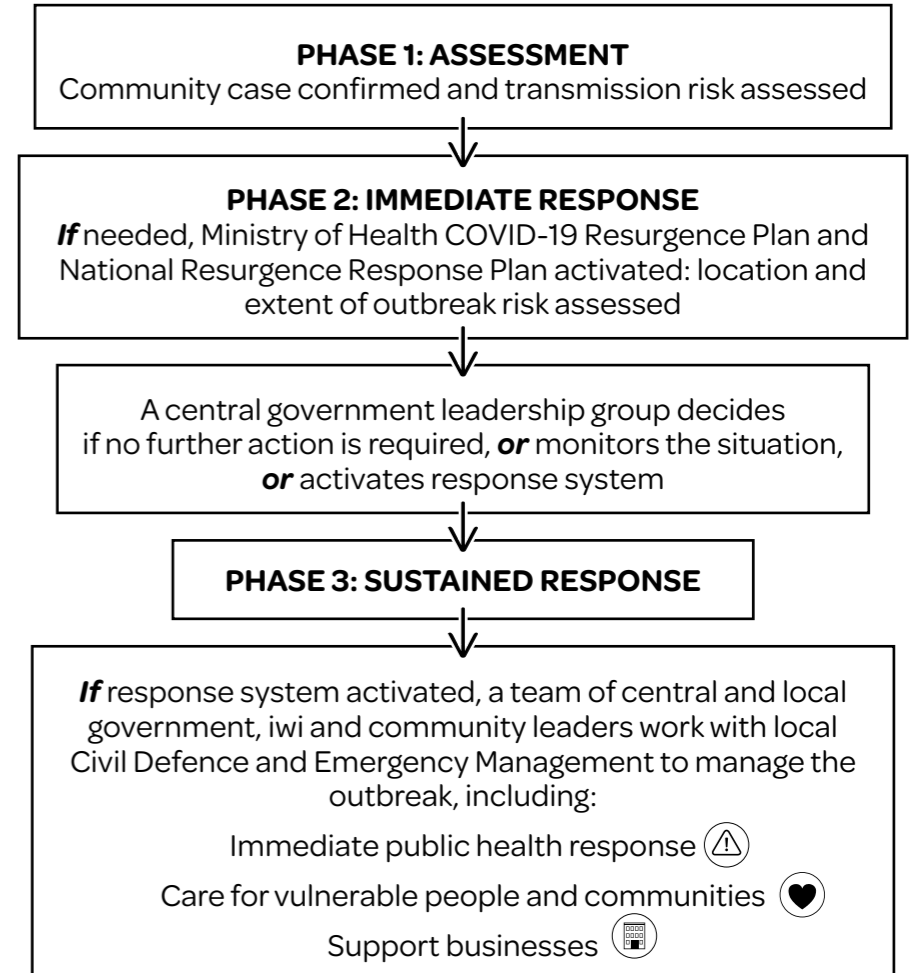


Face coverings
Where physical distancing is not possible.



Alert Level change
Localised with a boundary to contain the virus, or nationwide.

RESPOND How we would respond



MAKE SUMMER UNSTOPPABLE

Unite against COVID-19

Unstoppable summer: our plan to manage COVID-19

COVID-19 is a tricky virus – we’ve learned a lot from our experience so far, but we all have a part to play in stopping the spread. Our ‘test, trace and isolate’ approach focuses on being able to test lots of people and quickly trace and isolate contacts. We cannot predict where or how a new case might appear in the community, but we’ve done a lot of planning to handle a wide range of possible situations. While any response will depend on the circumstances such as the location or timing, it’s useful to think of three scenarios over summer:

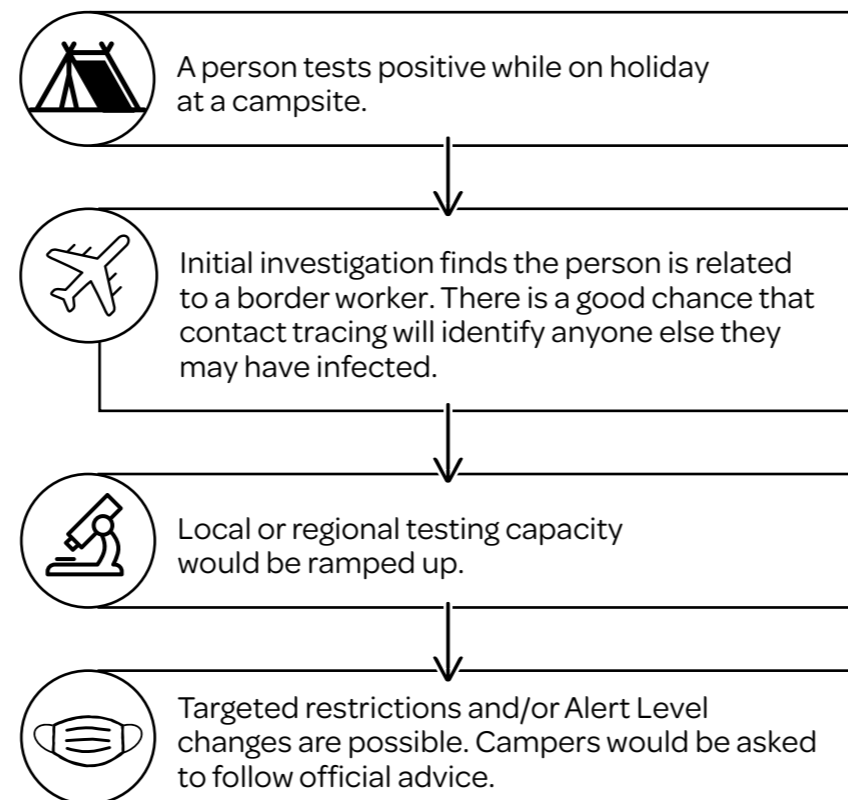
SCENARIO: Contained border case



WHAT YOU SHOULD DO

Keep an eye out for updates on [covid19.govt.nz](https://www.covid19.govt.nz) and [facebook.com/UniteAgainstCOVID19](https://www.facebook.com/UniteAgainstCOVID19)

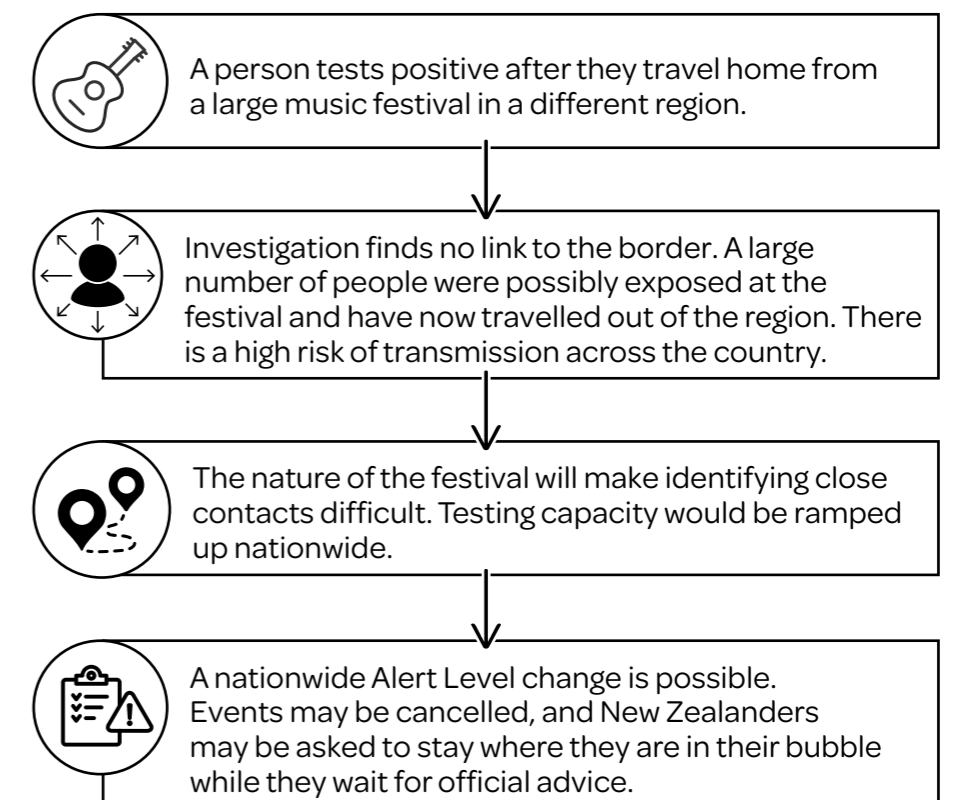
SCENARIO: National response likely



WHAT YOU SHOULD DO

Follow official advice, watch for media announcements and keep an eye on [covid19.govt.nz](https://www.covid19.govt.nz)

SCENARIO: National response likely



WHAT YOU SHOULD DO

Follow official advice, watch for media announcements and keep an eye on [covid19.govt.nz](https://www.covid19.govt.nz)

MAKE SUMMER UNSTOPPABLE

Unite against COVID-19

[covid19.govt.nz](https://www.covid19.govt.nz)   

New Zealand Government